

PART OF S. E. 1/4 SEC. 28, T. 6 N., R. 2 W., S. L. B. & M.  
**WILLOW WOOD SUBDIVISION NO. 2**  
 IN WEBER COUNTY  
 SCALE 1"=100'

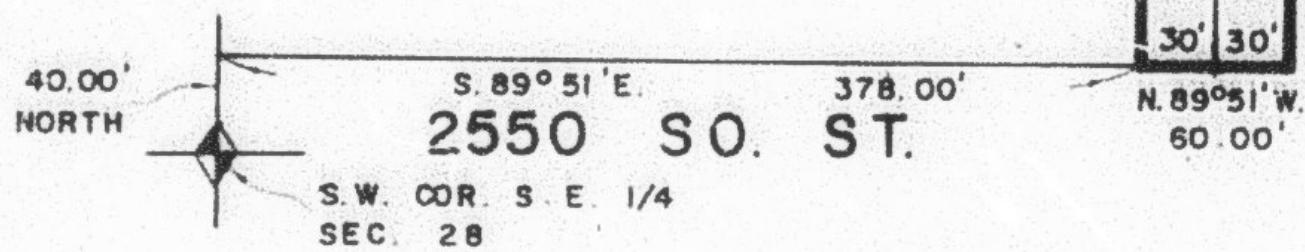
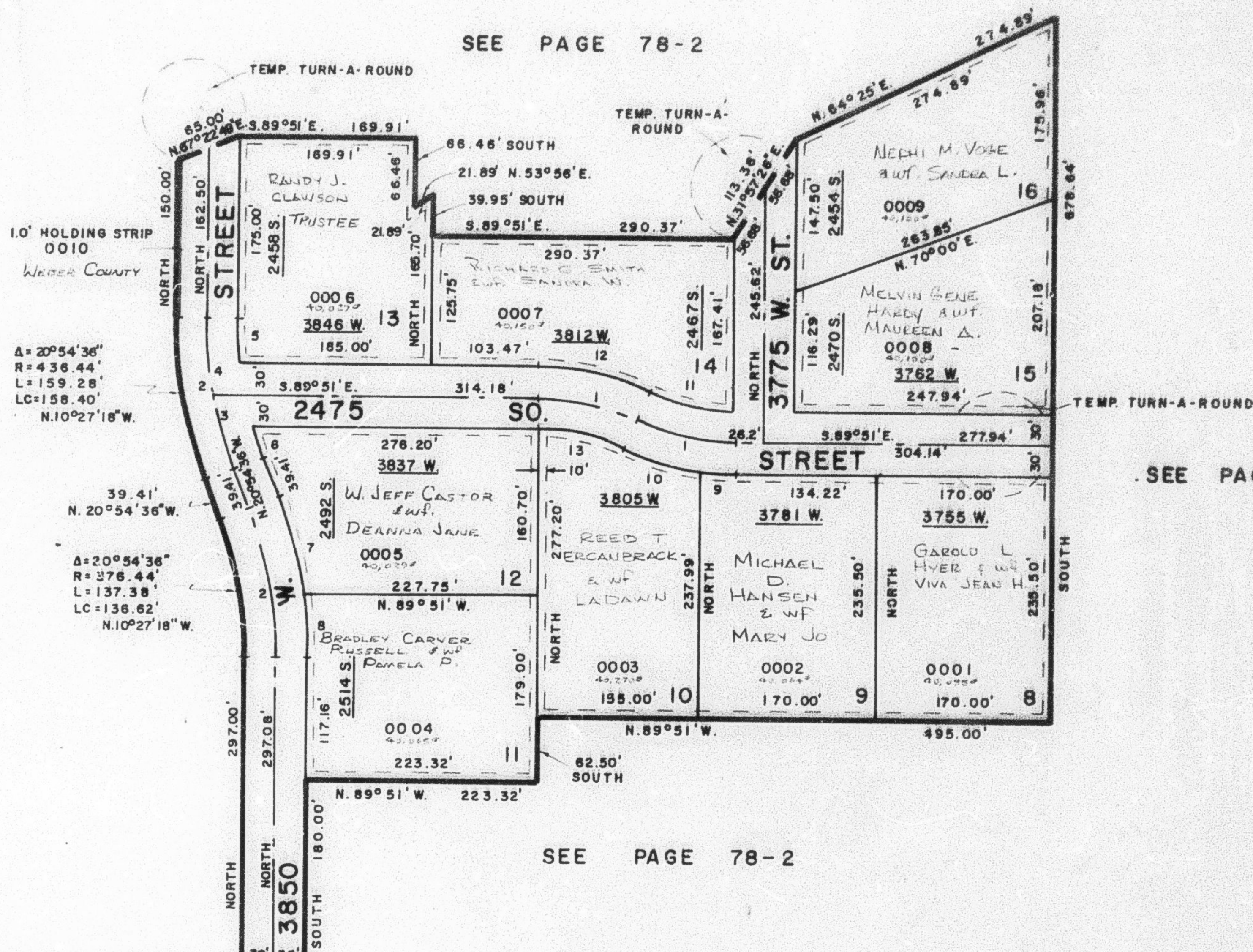
151

NOTE: PAGE 152 OMITTED

TAXING UNIT: 53

PREFIX: 15-151

SEE PAGE 78-2



CURVE DATA.

1	2	3	4	5	6	7	8	9	10	11	12	13
A= 24°38'43"	20°54'36"	10°23'50"	10°30'46"	6°44'48"	4°49'54"	12°45'45"	8°08'51"	7°56'45"	18°41'58"	23°31'39"	24°38'43"	24°38'43"
R= 228.89'	406.44'	406.44'	406.44'	376.44'	376.44'	436.44'	436.44'	258.89'	258.89'	198.89'	258.89'	198.89'
L= 98.45'	148.33'	73.76'	74.58'	44.33'	31.75'	97.22'	62.06'	35.90'	75.46'	81.87'	111.35'	85.55'
T= 50.00'	75.00'	36.98'	37.39'									
LC=				44.30'	31.75'	97.02'	62.01'	35.87'	75.19'	81.10'	110.50'	84.89'
				N. 3°22'24" W.	N. 18°29'39" W.	N. 14°31'44" W.	N. 4°04'26" W.	S. 85°52'37" E.	S. 73°33'16" E.	S. 76°58'07" E.	S. 77°31'39" E.	S. 77°31'39" E.

7' UTILITY & DRAINAGE EASEMENT  
 EACH SIDE OF PROPERTY LINE AS  
 INDICATED BY DASHED LINES

FOR COMPLETE ENG. DATA  
 SEE ORIG. DED. PLAT IN  
 BOOK 22, PAGE 82